

Quick Start Guide

C-more EA9-RHMI



1 Unpack and Inspect

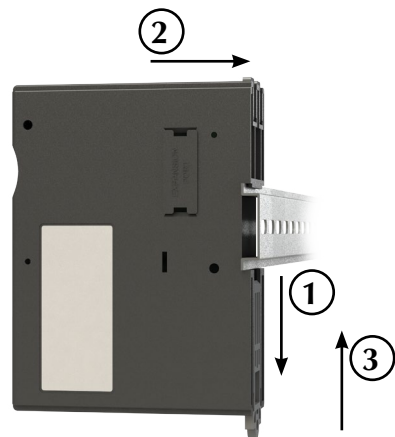
Included in this package should be the EA9-RHMI and this Quick Start Guide. Inspect the EA9-RHMI for damage. If damage has occurred in transit, immediately call the AutomationDirect® returns department at 1-800-633-0405.

2 Mounting

DIN Rail Mounting

EA9-RHMI can be mounted vertically on a standard 35mm x 7.5mm height DIN rail (Standard: CENELEC EN50022).

1. Pull the bottom retaining tab of the EA9-RHMI down.
2. Position the EA9-RHMI on the DIN rail.
3. Push the retaining tab up until it clicks to secure the EA9-RHMI on the DIN rail.



DIN Rail Mounting

Panel Mounting

EA9-RHMI can be mounted vertically on a panel using the tabs located on the back of the unit.

1. Fully extend the three mounting tabs located on the top and bottom of the unit.
2. Secure to a panel using three #8 standard or M4 metric screws and appropriate hardware.



Panel Mounting

3 Provide Power to EA9-RHMI

Wire a **dedicated 12-24 VDC** power source to the DC connector on the front of the EA9-RHMI, making sure to wire the ground terminal to a proper equipment ground. The recommended power supply is AutomationDirect p/n: PSB24-060. Turn on the power source and check the LED status indicators on the front of the C-more HMI for proper indication.

Recommended Fuse

Rating	ADC part number
2.5 A	MDL2-5

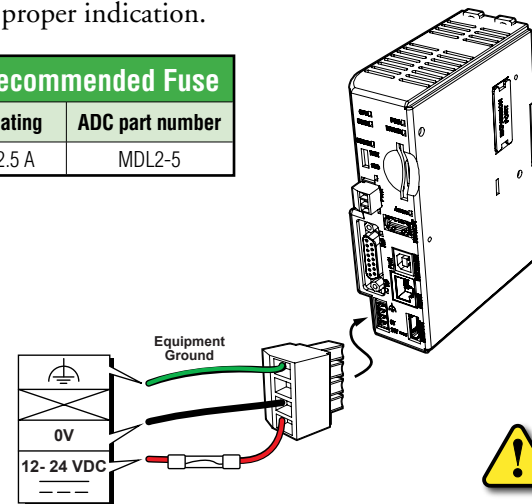
Power LED (Front of Unit)

Color	On	Off
Green	Power On	Power Error

Screw Torque

Power supply cable torque	32 - 35 oz-in (0.23 - 0.25 Nm)
---------------------------	-----------------------------------

Use 60 / 75°C copper conductors only, 16 - 28 AWG

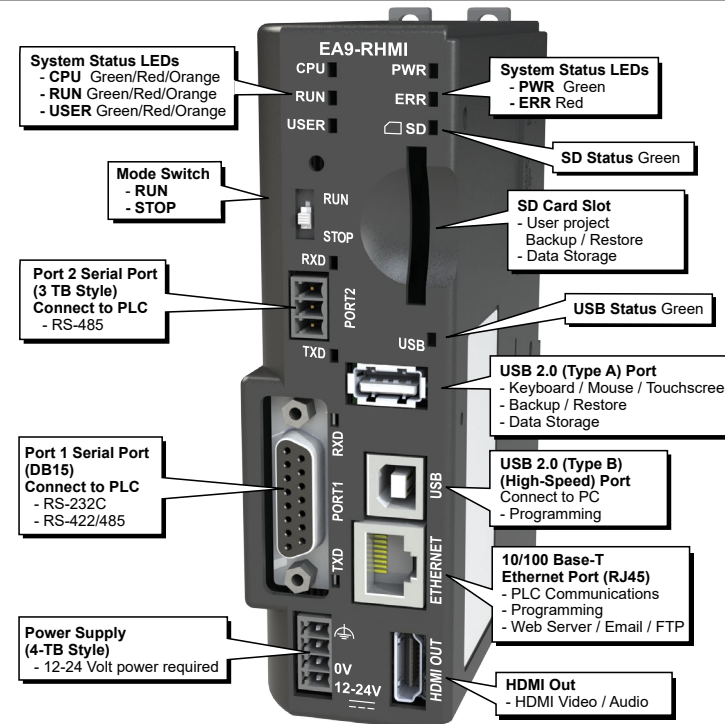


4 LEDs and Communication Connections

CPU Status LED (Green, Orange & Red)

	LED	CPU	RUN	ERR
State				
Status				
Loading OS		Blinking Green (0.5s)	OFF	OFF
CPU Running Normal		Green	-	OFF
Project Loaded and Running		-	Green	-
No User Project		-	Orange	-
Password Required		-	Blinking Orange (0.5s)	Blinking Red (0.5s)
Errors				
Power Loss Detection		Blinking Orange (0.2s)	-	-
Memory Error		Red	OFF	Red
OS Error		Blinking Orange (0.5s)	OFF	Red
Watch Dog Time Out		Blinking Red (0.5s)	-	Red
No Log Storage Found		-	Blinking Orange (0.5s)	Blinking Red (0.5s)
General Error*		-	Red (0.5s)	Blinking Red (0.5s)
Warning*		-	Blinking Orange (0.5s)	Blinking Red (0.5s)
Mode				
Recovery Mode		Blinking Orange (0.5s)	OFF	OFF
Safe Mode		Orange	OFF	Red

*Note - See Chapter 8 - Troubleshooting in the user manual for General Error and Warning explanations.



Safety Information

WARNING: To minimize the risk of potential safety problems, you should follow all applicable local and national codes that regulate the installation and operation of your equipment. These codes vary from area to area and it is your responsibility to determine which codes should be followed, and to verify that the equipment, installation, and operation are in compliance with the latest revision of these codes.

Equipment damage or serious injury to personnel can result from the failure to follow all applicable codes and standards. We do not guarantee the products described in this publication are suitable for your particular application, nor do we assume any responsibility for your product design, installation, or operation.

If you have any questions concerning the installation or operation of this equipment, or if you need additional information, please call technical support at 1-800-633-0405 or 770-844-4200.

This publication is based on information available at the time it was printed. At **AutomationDirect.com**® we constantly strive to improve our products and services, so we reserve the right to make changes to the products and/or publications at any time without notice and without obligation. This publication may also discuss features that may not be available in certain revisions of the product.

ADVERTISSEMENT: Afin de réduire au minimum le risque d'éventuels problèmes de sécurité, vous devez respecter tous les codes locaux et nationaux applicables régissant l'installation et le fonctionnement de votre équipement. Ces codes diffèrent d'une région à l'autre et, habituellement, évoluent au fil du temps. Il vous incombe de déterminer les codes à respecter et de vous assurer que l'équipement, l'installation et le fonctionnement sont conformes aux exigences de la version la plus récente de ces codes.

L'omission de respecter la totalité des codes et des normes applicables peut entraîner des dommages à l'équipement ou causer de graves blessures au personnel. Nous ne garantissons pas que les produits décrits dans cette publication conviennent à votre application particulière et nous n'assumons aucune responsabilité à l'égard de la conception, de l'installation ou du fonctionnement de votre produit.

Si vous avez des questions au sujet de l'installation ou du fonctionnement de cet équipement, ou encore si vous avez besoin de renseignements supplémentaires, n'hésitez pas à nous téléphoner au 770-844-4200.

Cette publication s'appuie sur l'information qui était disponible au moment de l'impression. À la société **AutomationDirect**, nous nous efforçons constamment d'améliorer nos produits et services. C'est pourquoi nous nous réservons le droit d'apporter des modifications aux produits ou aux publications en tout temps, sans préavis ni quelque obligation que ce soit. La présente publication peut aussi porter sur des caractéristiques susceptibles de ne pas être offertes dans certaines versions révisées du produit.

If the equipment is used in a manner not specified by the manufacturer, the protection provided by the equipment may be impaired.

This document provides simplified installation instructions and specifications. For complete installation and safety information, download the EA9-RHMI User Manual at <https://cdn.automationdirect.com/static/manuals/ea9rhmi/ea9rhmi.html>



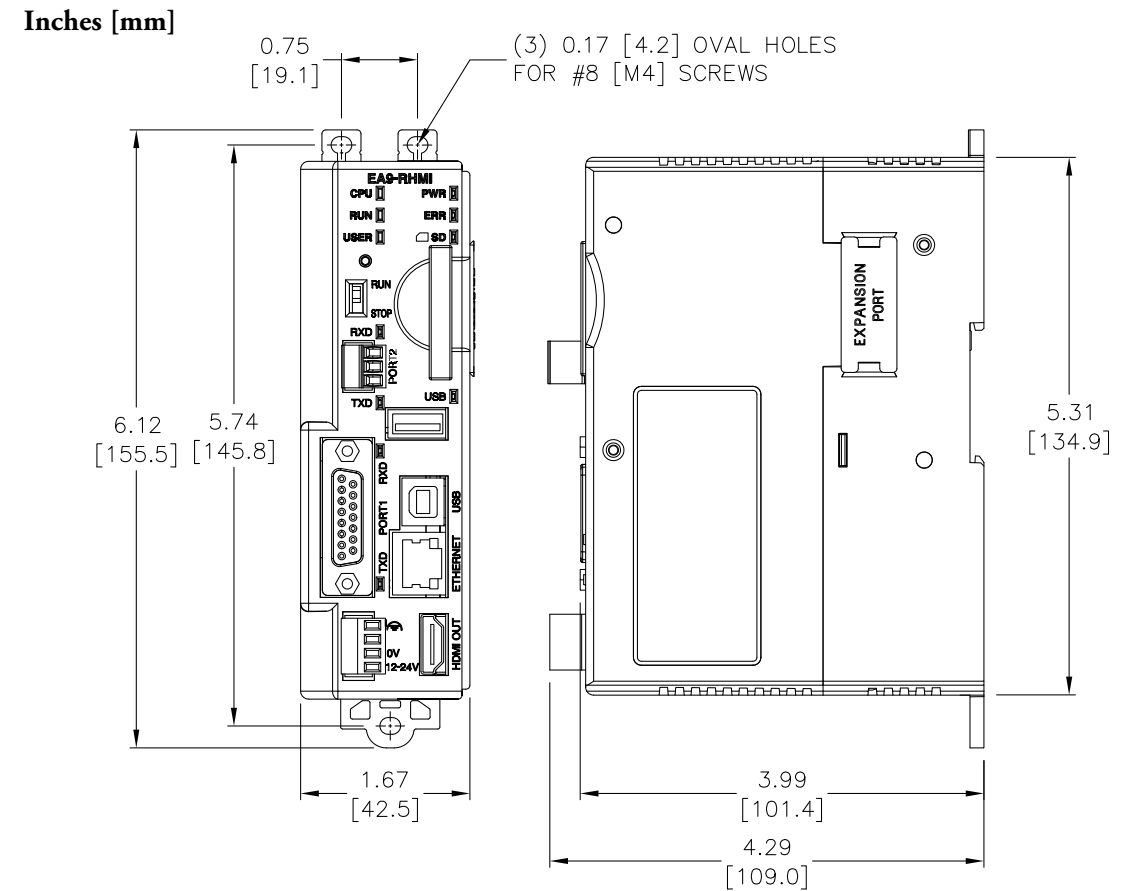
Specifications

Specifications	
Specification	EA9-RHMI
Power Consumption	Max 12.0 W 1.0A @ 12 VDC 0.5A @ 24 VDC
Internal Fuse (non-replaceable)	4.0A
Altitude	Up to 2000m (6562 ft) Max
Operating Temperature	0 to 50°C (32 to 122 °F); Maximum surrounding air temperature rating: 50°C (122°F) IEC 60068-2-14 (Test Nb, Thermal Shock)
Storage Temperature	-20 to 60°C (-4 to 140 °F) IEC 60068-2-1 (Test Ab, Cold) IEC 60068-2-2 (Test Bb, Dry Heat) IEC 60068-2-14 (Test Na, Thermal Shock)
Humidity Environment	5-95% RH (non-condensing) For use in Pollution Degree 2 environment, no corrosive gases permitted
Noise Immunity	(EN61131-2) EN61000-4-2 (ESD): 4kV (Contact Discharge) 2kV/4kV/8kV (Air Discharge) EN61000-4-3 (RFI): 10V/m (80MHz-1GHz), 3V/m (1.4GHz-2.0GHz) 1V/m (2.0GHz-2.7GHz) EN61000-4-4 (FTB): 2kV ,positive/negative, 5kHz(DC Power Port) EN61000-4-5 (Serge): 0.5kV line to line 0.5kV line to earth EN61000-4-6 (Conducted): 10V, 0.15MHz – 80MHz EN61000-4-8 (Power frequency magnetic field immunity): 30A/m (Local test) RFI, (145MHz, 440MHz 10W @10cm) Impulse 1000V @ 1µs pulse
Withstand Voltage	1000 VAC, 1 min. (FG to Power supply)
Insulation Resistance	> 10M ohm @ 500V DC (FG to Power supply)
Vibration	IEC60068-2-6 (Test Fc) 5-9Hz:3.5mm amplitude, 9-150Hz 1.0G 10 sweep cycles per axis on each of 3 mutually perpendicular axes
Shock	IEC60068-2-27 (Test Ea) 15G peak, 11ms duration, 3 shocks in each direction per axis, on 3 mutually perpendicular axes
Emission	EN55011 Class A (Radiated RF emission)
Agency Approvals	UL61010 CE (EN61131-2), RoHS (2011/65/EU) CUL Canadian C22.2

UL Satisfaction Ratings

Model Number	Input Ratings
EA9-RHMI	12 - 24 VDC (Range 10.2 - 26.4 VDC), Class 2, SELV or LEC (Limited Energy Circuit), Maximum 12.0W
Indoor Use only	
Terminal connecting wire size 16 - 28 AWG	
Connecting torque 32 - 35 oz-in (2 - 2.2 lbf-in) (0.23 - 0.25 Nm)	
Maximum surrounding air temperature rating, 50°C	
For use in Pollution Degree 2 environment	
All interface ports are intended to be directly connected to an isolated secondary circuit.	
Clean by wiping with a dry or water dampened lint free cloth.	
If the equipment is used in a manner not specified by the manufacturer, the protection provided by the equipment may be impaired.	

Dimensions



Mounting Clearances

