

COMPACT FLASH MEMORY CARD INSTALLATION INSTRUCTIONS

P/N EA-CF-CARD

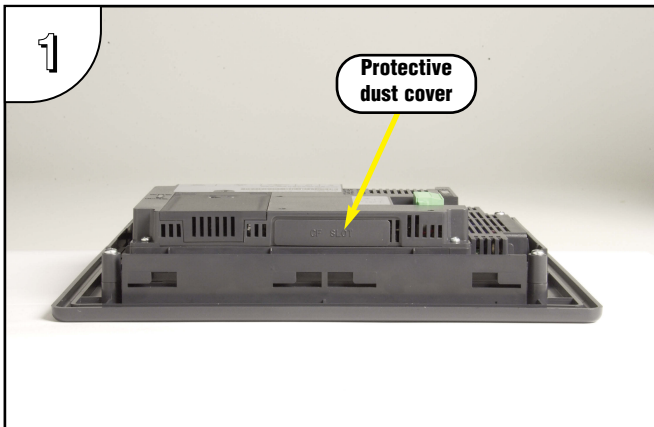


WARNING: Take the necessary steps to prevent damage that may be caused by static electricity discharge. Disconnect input power to the touch panel before proceeding.

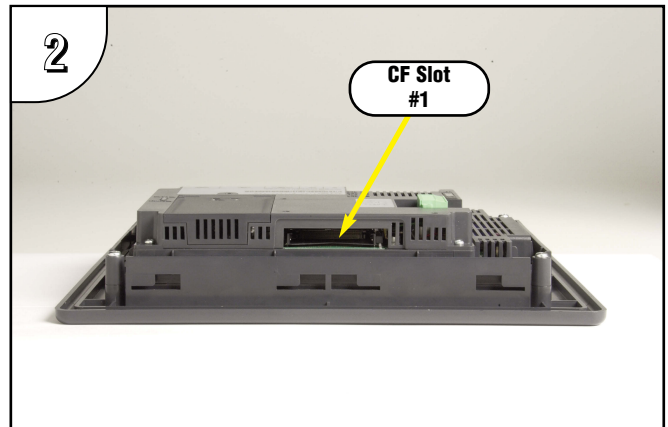


NOTE: EA-CF-CARD IS COMPATIBLE WITH EA7 SERIES TOUCH PANELS ONLY. EA-CF-CARD WILL NOT FIT EA9 SERIES PANELS

CF Card Installed in CF Slot #1: **Preparation:** If the touch panel is not already installed into a control cabinet, then in a clean environment, place the panel face down on a lint-free soft surface to prevent scratching the front of the panel.



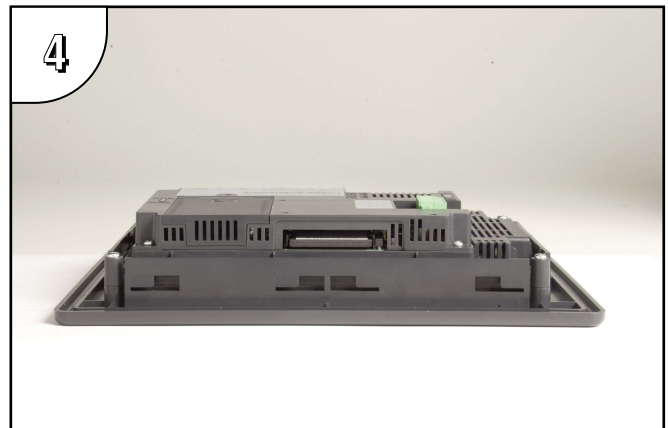
Remove the protective dust cover from the CF Slot #1 at the top of the touch panel by prying up on one edge. Sit the dust cover aside for re-installing after the CF card is installed.



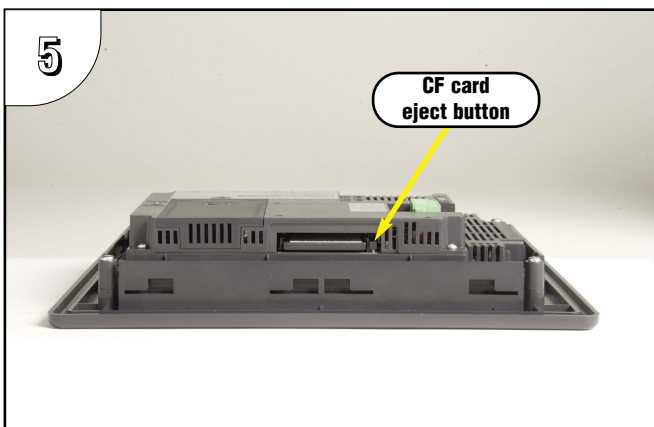
CF Slot #1 shown above with the protective dust cover removed.



Orientate the compact flash memory card so that the front label is facing the back of the panel and the CF card connector faces into the slot. There are guides on each side of the slot that will match the guides on the CF card. The CF card can only be inserted one way.



Gently press the CF card into the slot until it stops. You should feel a slight resistance as the CF card connector mates with the slot's connector. The CF card should be flush with the slot's opening. The dust cover can now be re-installed.



To remove the CF card from the CF Slot #1, press in on the eject button to the right of the CF card. This will cause the CF card to be partially ejected from the slot allowing removal.



NOTE: CF CARD INSTALLATION FOR CF SLOT #2 IS SHOWN ON THE BACK OF THIS DATA SHEET.

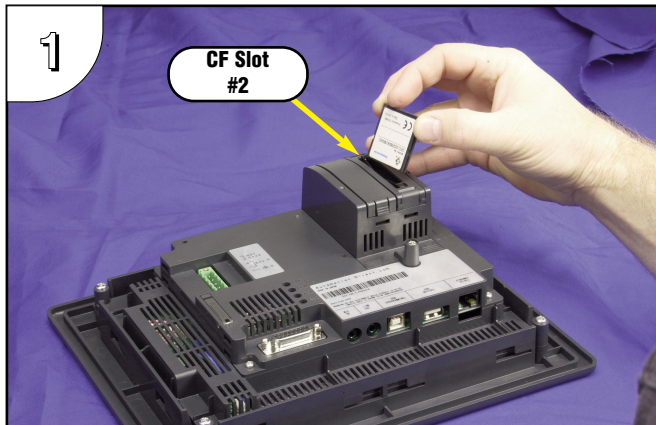


WARNING: Do NOT use EZTouch RAM or Flash memory cards with the C-more touch panels.

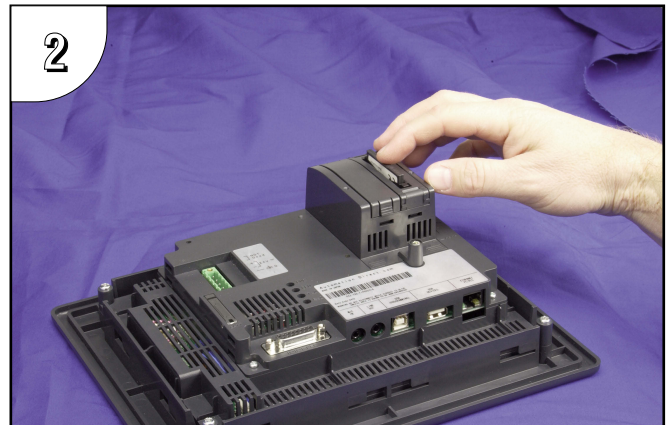


CF Card Installed in CF Slot #2:

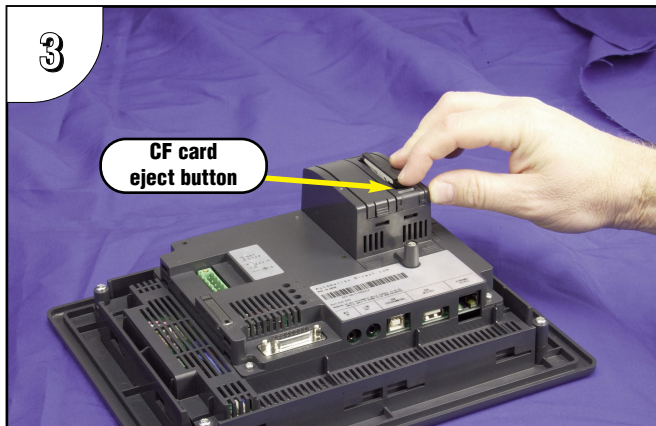
Preparation: Disconnect input power and all other connections, then remove the touch panel from the control cabinet. In a clean environment, place the panel face down on a lint-free soft surface to prevent scratching the front of the panel.



Orientate the compact flash memory card so that the front label is facing the power supply connector and the CF card connector faces into the slot. There are guides on each side of the slot that will match the guides on the CF card. The CF card can only be inserted one way.



Gently press the CF card into the slot until it stops. You should feel a slight resistance as the CF card connector mates with the slot's connector. The CF card should be flush with the slot's opening.



To remove the CF card from the CF Slot #2, press in on the eject button at the bottom of the CF card. This will cause the CF card to be partially ejected from the slot allowing removal.



NOTE: THE USE OF CF SLOT #2 REQUIRES THE INSTALLATION OF THE EXPANSION ASSEMBLY, P/N EA-EXP-OPT AND THE CF CARD INTERFACE MODULE, P/N EA-CF-IF.



WARNING: Do NOT use EZTouch RAM or Flash memory cards with the C-more touch panels.



Specifications/Features:

- CompactFlash™ Compatibility
- W/E Endurance 100,000 cycles
- Data transfer rate: 16 MB/second
- Operating Temp: -13 to 185°F (-25 to 85°C)
- Operating Humidity 85% max, non-condensing
- Storage Temp: -13 to 194 °F (-25 to 90°C)
- Storage Humidity 95% max, non-condensing

