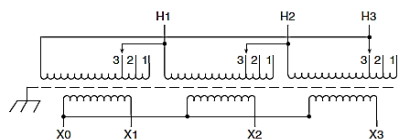
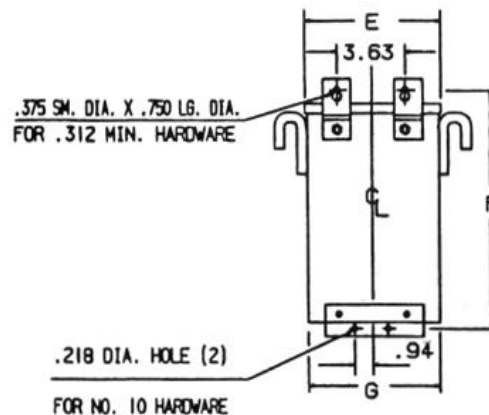
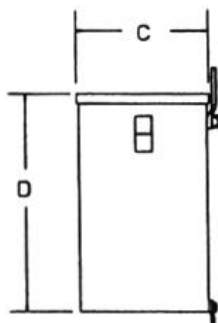
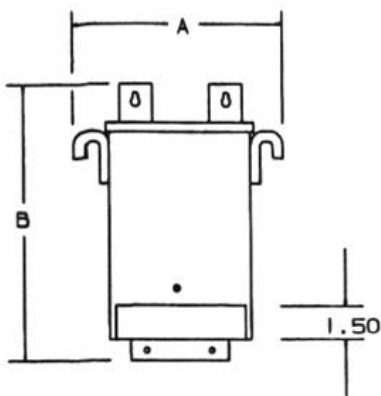
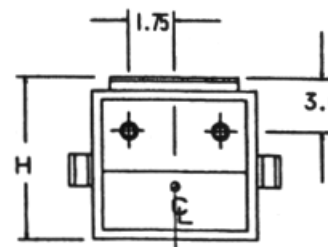


REVISIONS



NOTES:

- 1. KNOCKOUTS:
1.69 DIA. FOR 1.25 CONDUIT
1.13 DIA. FOR .75 CONDUIT



BOTTOM

Primary Volts	Connect Primary Lines To	Inter-Connect	Connect Secondary Lines To
600	H1, H2, H3	1	
570	H1, H2, H3	2	
540	H1, H2, H3	3	

Secondary Volts			
208			X1, X2, X3
120			X1 to X0
1 phase			X2 to X0
			X3 to X0

KVA	CATALOG NUMBER	VOLTAGE		MARKINGS	WEIGHT	PHASE	FREQUENCY
		HIGH	LOW				
3.0	T2A793301S	600Δ	208Y/120		75 Lbs	3φ	60Hz

Temp Rise:		115°C	TYPICAL PERFORMANCE DATA				
Insulation:		180°C	Regulation @ 100% PF		Windings:	CU	
Standards:		UL/CSA	Encapsulated				

A	B	C	D	E	F	G	H
12.37	11.63	7.12	9.06	9.87	10.89	9.75	7.47



DATE: 3-Feb-16

TYPE NO: