



DL205 Programming Tools and Cables

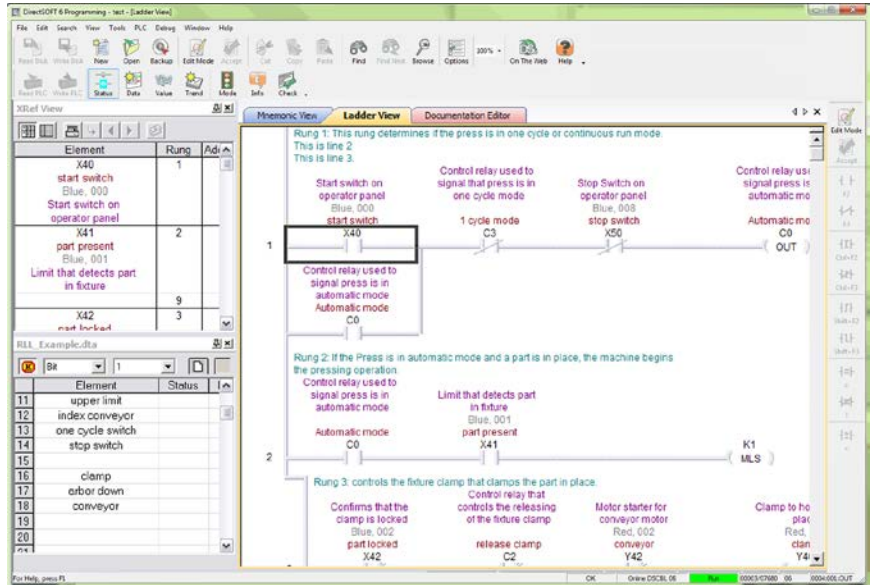
Selecting a programming device

There are two tools for programming the DL205 CPUs: **DirectSOFT** PC-based programming software and the D2-HPP handheld programmer.

DirectSOFT

programming software

Our powerful Windows-based programming package makes it easy for you to program and monitor your DL205 PLC system. See the **DirectLOGIC** Overview Section DL in this catalog for detailed information on **DirectSOFT**.



| DirectSoft Part Number | Price | Description |
|------------------------|----------|-----------------------------------------------------------------------------------------------------------|
| PC-DSOFT6 | \$462.00 | Programs all DirectLOGIC PLC CPUs; offers IBox intelligent instructions |
| PC-DS100 | Free | Free version of DirectSOFT ; programs all DirectLOGIC PLC CPUs; limited to 100 word program |

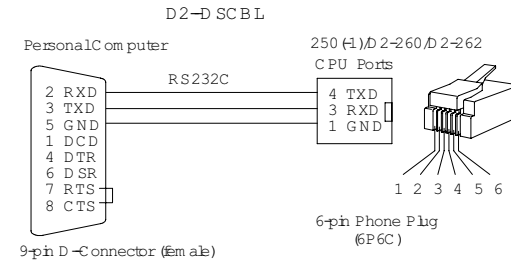
Note: D2-262 CPU requires **DirectSOFT** version 6.3 or later

DL205 programming cables

Choose the proper cable to connect the DL205 CPU to your PC running DirectSOFT.

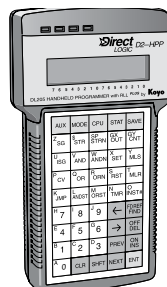
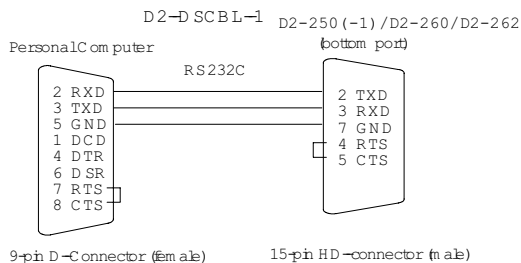
| CPU | Port | Cable | Price |
|---------------|-------------|-------------------|---------|
| D2-262 | Top port | D2-DSCBL | \$35.00 |
| | Bottom port | D2-DSCBL-1 | \$67.00 |

Pin labeling conforms to **IBM DTE** and **DCE** standards



Handheld programmer

The D2-HPP handheld programmer connects to an RJ12 phone jack port on any of the DL205 CPUs. The handheld unit contains a zero force insertion socket that can be used to store programs on an optional EEPROM. Can be used with DL05, DL06, DL105, and DL205 models.



D2-HPP
Handheld programmer,
cable included
(DV-1000CBL)