

microMAX™ AC Inverter-Duty Motors

1000:1 Constant Torque (TENV), 20:1 Constant Torque (TEFC)



Features

- Constant torque operation from 0 to base speed (TENV ratings)
- Constant torque operation from 1/20 speed to base speed (TEFC ratings)
- Constant horsepower to twice base speed (RPM)
- Class H insulation with CR200 (corona-resistant) magnet wire
- Continuous duty at 40°C ambient
- C-Face with rigid base, except C-Face with removable rigid base as noted
- Service Factor: 1.0
- Utilizes double shielded ball bearings
- Exxon Polyrex® EM bearing grease
- Eliminates brush and commutator maintenance
- Electrically reversible
- UL Recognized, CSA Certified, and CE Mark
- Three year warranty (through Marathon Electric)

Applications

- Replaces 90 volt and 180 volt PMDC motors (when used with AC variable frequency drives)
- Typical uses include: machine tools, conveyors, packaging machines, batching machines, printing equipment, pumps and fans.

Motor Shipping Schedule *

Same or one day *	Up to 7 days	Up to 10 days
-------------------	--------------	---------------

Color indicates shipping lead time in business days. Check stock status online.

* Certain heavy and oversized items can be shipped only via LTL. Check our website for current shipping method constraints by part number.

Prices & Specifications

Motor Specifications – microMAX

Part Number *	Price	HP	Base RPM	Volts	Encl.	NEMA Frame	Model No.	F.L. Amps	Weight (lb) *	Footnotes	Drawing Links		
Y500	\$299.00	1/4	1800	230	TENV	56C	56H17T2011	1.0	17	Q	PDF		
Y502	\$321.00	1/3					56H17T2013A	1.2	17	Q	PDF		
Y360	\$379.00	1/2					56H17T2017	1.8 / 0.9	25	-	PDF		
Y362	\$467.00	3/4					56H17F2017A	2.8 / 1.4	25	-	PDF		
Y364	\$526.00	1					56H17F2021	3.2 / 1.6	28	-	PDF		
Y366	\$654.00	1-1/2		230/460	TENV	145TC	145THTR5329AA	4.8 / 2.4	45	6	PDF		
Y368	\$867.00	2					145THFR5329	5.8 / 2.9	45	6	PDF		
Y1999 †	\$1,111.00	3					TEFC	182TC	182THFW7729AA	8.4 / 4.2	64	6	PDF
Y1372 †	\$1,260.00	5						184TC	184THFW7726AA	13.0 / 6.5	92	6	PDF
Y994	\$1,612.00	7-1/2						213TC	213THFW7726	21.4 / 10.7	125	6	PDF
Y996	\$2,063.00	10	215TC	215THFW7726	27.6 / 13.8	135	6	PDF					

* Refer to the Motor Shipping Schedule table for shipping information.

Certain heavy and oversized items can be shipped only via LTL. Check our web site for current shipping method constraints by part number.

† Detailed information on the previous versions of these motors (Y999 & Y372) can be found at www.AutomationDirect.com/Retired-Products.

Footnotes: Q = "Quick Connect" terminal board (1/4-in female spade lug) 6 = Bolt-on, removable base for footless mounting option

Note: Please review the AutomationDirect Terms & Conditions for warranty and service on this product. Warranty service can be arranged through numerous Marathon Electric service centers. See list of service centers on our Web site at www.automationdirect.com.

microMAX™ AC Inverter-Duty Motors

Performance Data

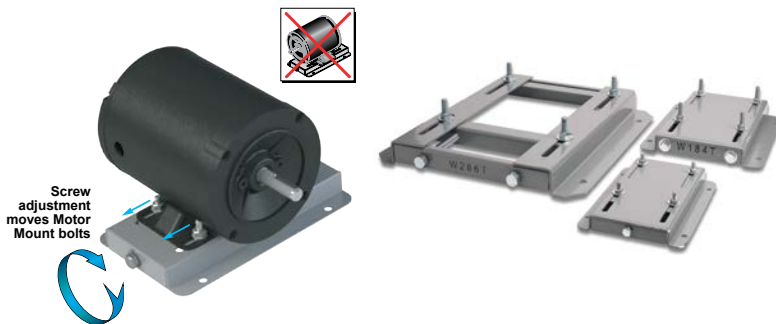
Performance Data (460 Volt except as indicated) – microMAX													
Part Number	HP	NEMA Design	F.L. RPM	Min. RPM	F.L. AMPS @460V	N.L. AMPS @460V	F.L. Torque (lb-ft)	B.D. Torque (lb-ft)	Max. CHP RPM*	Max. Safe RPM	F.L. Effic.	F.L. Power Factor	Rotor Inertia (lb-ft ²)
Y500	1/4 (230V)	B	1725	1.8	1.0 (230V)	0.7 (230V)	0.75	3.7	3520	5400	72.0	65.0	0.040
Y502	1/3 (230V)	A	1725	0	1.2 (230V)	0.9 (230V)	1.0	4.5	3450	5400	74.0	67.0	0.045
Y360	1/2	B	1725	1.8	0.9	0.5	1.5	6.8	3520	5400	80.0	72.0	0.075
Y362	3/4	A	1725	90	1.4	1.0	2.3	9.5	3520	4000	75.5	70.5	0.055
Y364	1	B	1725	90	1.6	0.9	3.0	12.0	3520	4000	78.5	77.5	0.090
Y366	1-1/2	A	1755	0	2.4	1.6	4.5	29.0	3500	5400	85.5	69.0	0.140
Y368	2	B	1740	90	2.9	1.6	6.0	29.0	3530	4000	82.5	77.0	0.140
Y1999	3	A	1765	90	4.2	2.2	8.9	33.8	3530	4000	87.5	76.4	0.38
Y1372	5		1760	90	6.5	2.8	15	48.6	3520	4000	87.5	81.6	0.357
Y994	7-1/2		1770	90	10.7	6.2	22.3	80.0	3565	4000	89.5	72.5	0.75
Y996	10	B	1770	90	13.8	7.8	30.0	110	3570	4000	91.0	74.0	1.00

* Maximum Constant HP RPM is for direct-coupled loads.

STABLE™ Motor Slide Bases

Mounting Slide Bases for 56 to 449T NEMA Motors Features

- Allows adjustment of motor mounting position
- Slide direction is perpendicular to motor shaft
- Double adjusting screws for frames 182T-449T
- Manufactured to precise dimensional standards
- Dimensionally interchangeable with existing major makes
- Heavy-duty steel construction
- Painted with oven-baked primer for better adhesion of customer's paint
- All "D" bolts (motor mounting bolts) are fixed to the exact motor foot pattern
- All "D" bolts are welded into position to prevent spinning and dropping from slots
- Nuts and washers are provided for securing the motor to the slide base



STABLE Motor Slide Bases for 3-Phase Motors											
Part Number (MTA-BASE-xxx)	Price	Fits Frame Type	Product Wt. (lb)	Fits Motor						Drawing Links	
				IronHorse	Leeson®	WEG (Part number ending in...)	Marathon				
					WashGuard®		microMAX, Max+, Black Max, Blue Max, SyMAX	XRI GP & NEMA Premium, Jet Pump	Globetrotter		
W56	\$14.00	56*	2.8	MTPM-P3x-1x18							
				MTPM-P5x-1x18							
				MTPM-P7x-1x18							
				MTPM-0xx-1x18							
				MTPM-1xx-1x18							
				MTR(2)(P)-xxx-xxxxx*							
				MTRJ(P)-xxx-xxxxx							
				MTSN-P33-3BD18							
				<u>MTSN-P33-3BD18R</u>	<u>112427.00</u>						
				<u>MTSN-P33-3BD36</u>	<u>112428.00</u>						
				<u>MTSP-P33-3BD18</u>	<u>112429.00</u>						
				<u>MTSP-P33-3BD18R</u>	<u>112430.00</u>						
				<u>MTSP-P33-3BD36</u>	<u>113019.00</u>						
				<u>MTSP-P33-3BD36R</u>	<u>113023.00</u>						
				<u>MTSN-P50-3BD18</u>	<u>113473.00</u>						E2000
				<u>MTSN-P50-3BD18R</u>	<u>113586.00</u>						D390
				<u>MTSN-P50-3BD36</u>	<u>113590.00</u>				Y500		G580
				<u>MTSP-P50-3BD12</u>	<u>113591.00</u>				Y502		D391
				<u>MTSP-P50-3BD18</u>	<u>113649.00</u>				Y360		G581
				<u>MTSP-P50-3BD18R</u>	<u>116644.00</u>				Y362		K705
				<u>MTSP-P50-3BD36</u>	<u>116645.00</u>				Y364		D392
				<u>MTSP-P50-3BD36R</u>	<u>119468.00</u>				Y280		G582
				<u>MTSN-P75-3BD18</u>	<u>119469.00</u>				Y281		K707
				<u>MTSN-P75-3BD18R</u>	<u>119471.00</u>				Y282		D393A
				<u>MTSN-P75-3BD36</u>	<u>119475.00</u>				Y592(-A772)		K708A
				<u>MTSP-P75-3BD12</u>	<u>119476.00</u>			(...)56-S	Y534(-A772)		G583A
				<u>MTSP-P75-3BD18</u>	<u>119478.00</u>			(...)56C-S	Y535(-A772)		K709A
				<u>MTSP-P75-3BD18R</u>	<u>119480.00</u>				Y555(-A772)		D394A
				<u>MTSP-P75-3BD36</u>	<u>119482.00</u>				Y556(-A772)		K721A
				<u>MTSP-P75-3BD36R</u>	<u>119483.00</u>				SY001		G584A
				<u>MTSN-001-3BD18</u>	<u>191202.00</u>				SY003		D395A
				<u>MTSN-001-3BD18R</u>	<u>191204.00</u>				SY004		G585A
				<u>MTSN-001-3BD36</u>	<u>191205.00</u>				SY005		K724A
				<u>MTSP-001-3BD18</u>	<u>191206.00</u>				SY035		D396A
				<u>MTSP-001-3BD18R</u>	<u>191207.00</u>						K725A
				<u>MTSP-001-3BD36</u>	<u>191208.00</u>						J066A
				<u>MTSP-001-3BD36R</u>	<u>191560.00</u>						
				<u>MTSN-1P5-3BD18</u>	<u>191561.00</u>						
				<u>MTSN-1P5-3BD18R</u>	<u>191562.00</u>						
				<u>MTSN-1P5-3BD36</u>	<u>191563.00</u>						
				<u>MTSP-1P5-3BD18</u>	<u>191564.00</u>						
				<u>MTSP-1P5-3BD18R</u>	<u>191569.00</u>						
				<u>MTSP-1P5-3BD36</u>							
				<u>MTSP-1P5-3BD36R</u>							
				<u>MTSN-002-3BD18</u>							
				<u>MTSN-002-3BD18R</u>							
				<u>MTSN-002-3BD36</u>							
				<u>MTSP-002-3BD18</u>							
				<u>MTSP-002-3BD18R</u>							
				<u>MTSP-002-3BD36</u>							
<u>MTSP-002-3BD36R</u>											

* IronHorse MTR2 56HC motors have double-punched bases to fit on slide base MTA-BASE-W56.

STABLE™ Motor Slide Bases

STABLE Motor Slide Bases for 3-Phase Motors										
Part Number (MTA-BASE- xxx)	Price	Fits Frame Type	Product Wt. (lb)	Fits Motor						Drawing Links
				IronHorse	Leeson®	WEG (Part number ending in...)	Marathon			
					WashGuard®		microMAX, Max+, Black Max, Blue Max, SyMAX	XRI GP & NEMA Premium, Jet Pump	Globetrotter	
W143T	\$26.00	143T/ TC	4.6	MTCP2-001-3BD18(C) MTCP2-1P5-3BD36 MTSN-1P5-3BD36-14 MTSP-1P5-3BD36-14 MTSP-1P5-3BD36R-14	191487.00 191565.00		Y536(-A772)	E2001A E2003	-	PDF
W145T	\$26.00	145T/ TC	5.1	MTCP2-001-3BD12 MTCP2-1P5-3BD18(C) MTCP2-002-3BD18(C) MTCP2-002-3BD36 MTSP-001-3BD12 MTSN-1P5-3BD18-14 MTSN-1P5-3BD18R-14 MTSP-1P5-3BD18-14 MTSP-1P5-3BD18R-14 MTSN-002-3BD18-14 MTSN-002-3BD18R-14 MTSN-002-3BD36-14 MTSP-002-3BD18-14 MTSP-002-3BD18R-14 MTSP-002-3BD36-14 MTSP-002-3BD36R-14	121866.00 121868.00 121870.00 122182.00 122184.00 122185.00 191490.00 191491.00 191570.00	(...) 145T-S (...) 145TC-S	Y366 Y368 Y284 Y285 Y537(-A772) Y538(-A772) Y551(-A772) Y557(-A772)	E2002 E2004A E2007A	-	PDF
W182T	\$35.50	182T/ TC	9.2	MTCP2-1P5-3BD12 MTCP2-003-3BD18(C) MTCP2-003-3BD36 MTSP-1P5-3BD12 MTSN-003-3BD18-18 MTSN-003-3BD36-18 MTSP-003-3BD18-18 MTSP-003-3BD36-18	132196.00 132198.00		Y1999 Y286A Y541A(-A772) Y558A(-A772) SY036 SY066	E2009 E2010	GT0010A GT1010A	PDF
W184T	\$35.50	184T/ TC	10	MTCP2-002-3BD12 MTCP2-005-3BD18(C) MTCP2-005-3BD36 MTF-00x-1C18 MTSP-002-3BD12 MTSP-005-3BD18 MTSP-005-3BD36	132197.00 132200.00 132201.00 132440.00		Y1372 Y287A Y540(-A772) Y543A(-A772) Y559A(-A772) E2012 E2013 SY007A SY067	-	GT0013A GT1013A GT1210A GT1212A GT1213A	PDF
W213T	\$52.00	213T/ TC	13	MTCP2-003-3BD12 MTCP2-7P5-3BD18(C) MTCP2-7P5-3BD36 MTSP-003-3BD12 MTSP-7P5-3BD18	140819.00 140822.00 141266.00		Y994 Y542(-A772) Y545(-A772) Y560(-A772) E2011 E2016A E2011A E2016B SY068	-	GT0016A GT1016A GT1216A	PDF
W215T	\$52.00	215T/ TC	15	MTCP2-005-3BD12 MTCP2-010-3BD18(C) MTCP2-010-3BD36 MTSP-005-3BD12 MTSP-010-3BD18	140820.00 140821.00		Y996 Y544(-A772) Y547(-A772) Y561(-A772) E2018 E2014A E2018A SY069	-	GT0019A GT1019A GT1218A GT1219A	PDF
W254T	\$71.00	254T/ TC	18	MTCP2-7P5-3BD12 MTCP2-015-3BD18(C) MTCP2-015-3BD36 MTSP-015-3BD18	-		Y546(-A772) Y549(-A772) Y562(-A772)	-	GT0059 GT1022A GT1222A	PDF

* IronHorse MTR2 56HC motors have double-punched bases to fit on slide base MTA-BASE-W56.

STABLE™ Motor Slide Bases

STABLE Motor Slide Bases for 3-Phase Motors										
Part Number (MTA-BASE- xxx)	Price	Fits Frame Type	Product Wt. (lb)	Fits Motor						Drawing Links
				IronHorse	Leeson®	WEG (Part number ending in...)	Marathon			
					WashGuard®		microMAX, Max+, Black Max, Blue Max, SyMAX	XRI GP & NEMA Premium, Jet Pump	Globetrotter	
W256T	\$71.00	256T/ TC	19	MTCP2-010-3BD12 MTCP2-020-3BD18(C) MTCP2-020-3BD36 MTSP-020-3BD18	-		Y548(-A772) Y552(-A772) Y563(-A772)	-	GT0062 GT1025A GT1225A	PDF
W284T	\$79.00	284T/ TC	20	MTCP2-015-3BD12 MTCP2-025-3BD18(C)	-		Y553(-A772)	-	GT0065 GT1028A	PDF
W286T	\$79.00	286T/ TC	21	MTCP2-020-3BD12 MTCP2-030-3BD18(C)	-		Y393(-A772)	-	GT0067 GT1031A	PDF
W324T	\$116.00	324T/ TC	30	MTCP2-040-3BD18(C)	-		Y571(-A774) Y513(-A775)	-	GT0073 GT1034A	PDF
W326T	\$116.00	326T/ TC	31	MTCP2-050-3BD18(C)	-		Y572(-A774) Y514(-A775)	-	GT0077 GT1037A	PDF
W364T	\$158.00	364T/ TC	43	MTCP2-060-3BD18(C)	-		Y573(-A774) Y515(-A775)	-	GT1040A	PDF
W365T	\$158.00	365T/ TC	43	MTCP2-075-3BD18(C)	-		Y574(-A774) Y516(-A775)	-	GT1043A	PDF
W404T	\$193.00	404T/ TC	58	-	-		-	-	-	PDF
W405T	\$193.00	405T/ TC	60	MTCP2-100-3BD18(C)	-		Y575(-A774) Y517(-A775)	-	GT1046A	PDF
W444T	\$219.00	444T	63	MTCP2-125-3BD18	-		-	-	GT1049A	PDF
W445T	\$219.00	445T	65	MTCP2-150-3BD18	-		-	-	GT1052A	PDF
W447T	\$288.00	447T	89	MTCP2-200-3BD18	-		-	-	GT1055A	PDF
W449T	\$288.00	449T	94	MTCP2-250-3D18 MTCP2-300-3D18	-		-	-	-	PDF

* IronHorse MTR2 56HC motors have double-punched bases to fit on slide base [MTA-BASE-W56](#).

STABLE™ Motor Slide Bases

Mounting Slide Bases for 56 to 215T NEMA Motors Features

STABLE Motor Slide Bases for 1-phase Motors									
Part Number	Price	Fits Frame Type	Product Wt. (lb)	Fits Motor					
				IronHorse	Leeson®	Marathon			
					Washguard®	Marathon DP GP (NEMA Service Factor)	Marathon DP Air Compressor	Fan & Blower	Marathon TE GP 4-in-1
<u>MTA-BASE-W56</u>	\$14.00	56*	2.8	MTR2-xxx-1AB18 MTR2-xxx-1AB36 MTPM-xxx-1L18 MTPM-xxx-1M18	112431.00	<u>C158A</u>	D010 C169 C704 D017	C216	<u>G570</u>
					112527.00	<u>G915A</u>		D311	<u>D311</u>
					112528.00	<u>C175A</u>		<u>C1153</u>	<u>G571</u>
					112529.00	<u>C167A</u>		<u>C1155</u>	<u>D312</u>
					113583.00	<u>C179A</u>		<u>B319</u>	<u>G572</u>
					114311.00	<u>G937A</u>		<u>D118</u>	<u>D313</u>
					114313.00	<u>C185A</u>		<u>C1158</u>	<u>G573</u>
					114317.00	<u>C187A</u>		<u>C235</u>	<u>D314</u>
					191475.00	<u>C193A</u>		<u>D115</u>	<u>G574</u>
					191477.00	<u>E261A</u>		<u>C1160</u>	<u>D315</u>
					191479.00	<u>E268A</u>		<u>C1161</u>	<u>G575</u>
						<u>EG277A</u>		<u>B352</u>	<u>D316</u>
					<u>MTA-BASE-W143T</u>	\$26.00		143T / TC	4.6
<u>MTA-BASE-W145T</u>	\$26.00	145TC / TC	5.1	-	-	<u>C191</u> <u>I127</u> <u>C194</u>	-	-	-
<u>MTA-BASE-W182T</u>	\$35.50	182T / TC	9.2	-	-	-	-	-	-
<u>MTA-BASE-W184T</u>	\$35.50	184 / TC	10	MTF-00x-1C18	-	-	<u>Z502</u>	-	-
<u>MTA-BASE-W213T</u>	\$52.00	213T / TC	13	-	-	-	-	-	-
<u>MTA-BASE-W215T</u>	\$52.00	215T T TC	15	-	-	-	-	-	-

* IronHorse MTR2 56HC motors have double-punched bases to fit on slide base [MTA-BASE-W56](#).